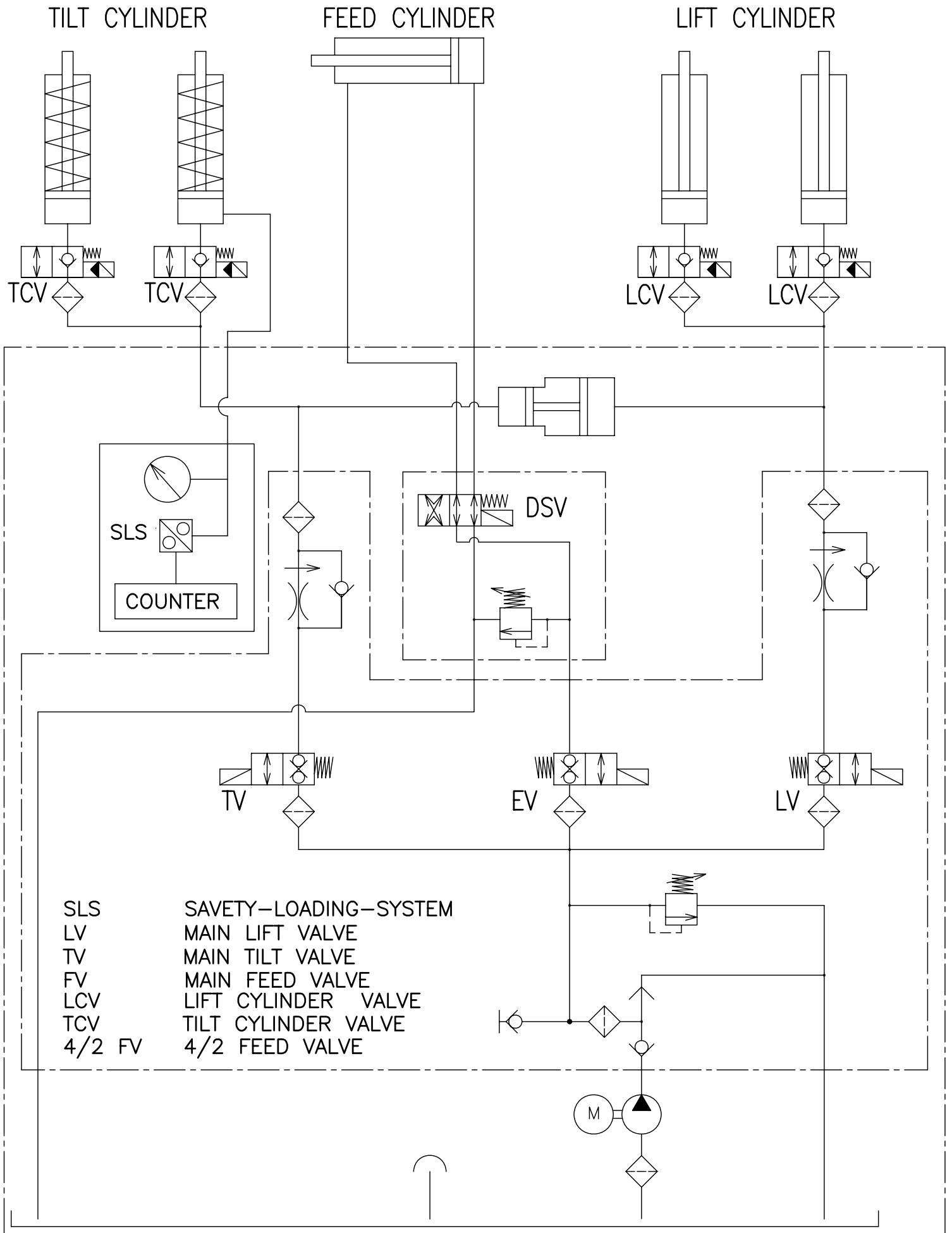
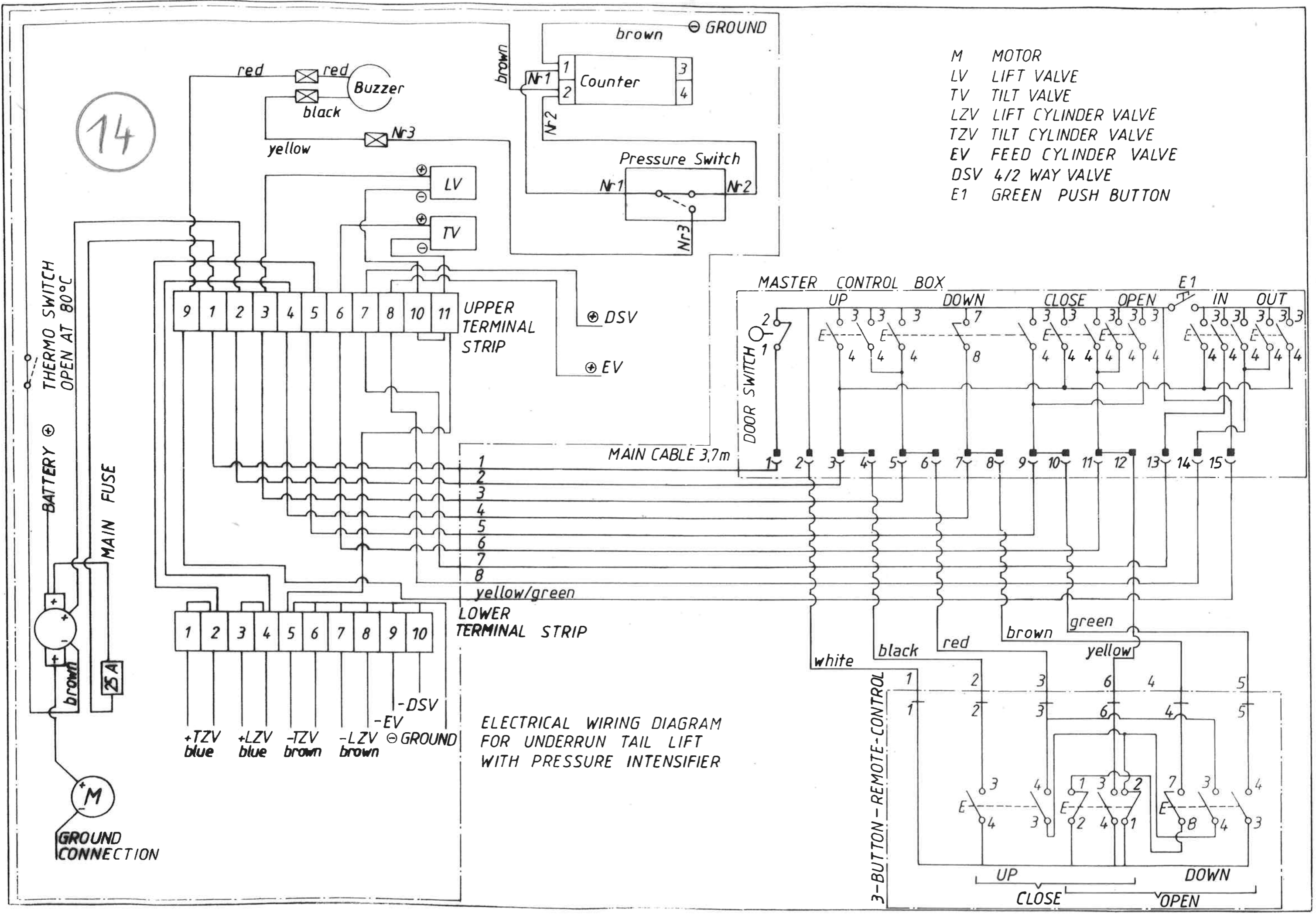


914 WIRING SYMBOL (VB12+VB-42)



- M MOTOR
- LV LIFT VALVE
- TV TILT VALVE
- LZV LIFT CYLINDER VALVE
- TZV TILT CYLINDER VALVE
- EV FEED CYLINDER VALVE
- DSV 4/2 WAY VALVE
- E1 GREEN PUSH BUTTON



14

THERMO SWITCH
 OPEN AT 80°C
 BATTERY ⊕
 MAIN FUSE
 25A
 GROUND CONNECTION
 M

9 1 2 3 4 5 6 7 8 10 11
 UPPER
 TERMINAL
 STRIP

1 2 3 4 5 6 7 8 9 10
 LOWER
 TERMINAL STRIP
 ⊕ TZV blue
 ⊕ LZV blue
 ⊖ TZV brown
 ⊖ LZV brown
 ⊖ DSV
 ⊖ EV
 ⊖ GROUND

MAIN CABLE 3,7m

MASTER CONTROL BOX
 UP 3 3 3
 DOWN 7
 CLOSE 3 3
 OPEN 3 3 3
 IN 3 3
 OUT 3 3
 DOOR SWITCH
 E1

3-BUTTON - REMOTE-CONTROL
 UP
 CLOSE
 DOWN
 OPEN